

N.W. 1/4 OF SEC. 27, T.7N., R.1E., S.L.B. & M.

21-2

IN WEBER COUNTY

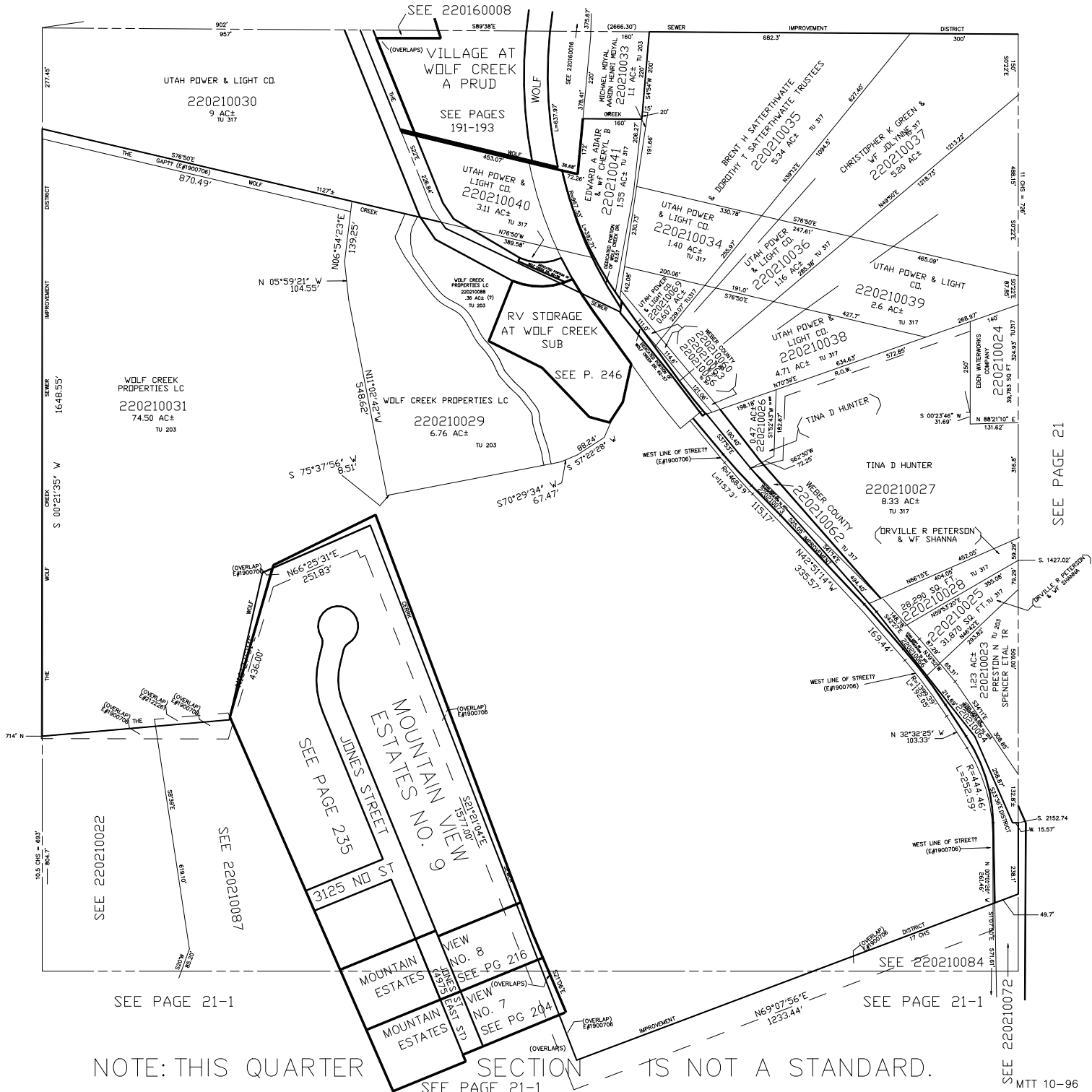
SCALE 1" = 200'

SEE PAGE 16

TAXING UNIT: 203, 317

SEE PAGE 22-1

SEE PAGE 21



NOTE: THIS QUARTER SECTION IS NOT A STANDARD.